



## IMCUSTOMEYE Consortium

- Consejo Superior de Investigaciones Científicas (CSIC) - ES
- University of Liverpool - UK
- National University of Ireland Galway - IE
- Institute of Physical Chemistry, Polish Academy of Sciences (IChF PAN) - PL
- Instituto Oftalmológico Fernández Vega - ES
- University College of London - UK
- Moorfields Eye Hospital - UK
- IROC Science - CH
- OCULUS - DE
- 2EyesVision - ES
- Optimo Medical - CH

## KEY CONTACTS

Coordination & Project Management:  
CSIC

Exploitation & Commercialization:  
IROC Science

## FOLLOW US



[www.imcustomeye.eu](http://www.imcustomeye.eu)

@imcustomeye



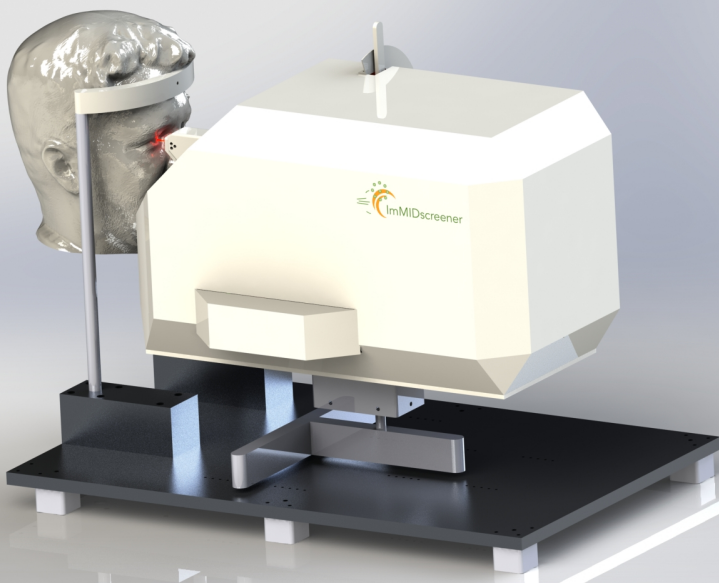
PHOTONICS<sup>21</sup>



## IMCUSTOMEYE

Advanced biomechanics for  
corneal screening,  
diagnosis, and  
treatment planning





Eye conditions such as keratoconus or myopia affect millions of people in the world, and can often lead to a loss of independence & productivity. With ocular biomechanics being a direct indicator of these diseases, there is a growing need for improved biomechanical assessment of the eye.

IMCUSTOMEYE's mission is to provide clinicians with a clear insight into the biomechanical state of their patients' eyes so that they can screen, diagnose, and treat these patients with more accuracy and safety.

We offer advanced methods to customize and guide treatments that modulate or rely on the biomechanical response of the cornea.

## MARKETABLE PRODUCTS

- Stand-alone diagnostic device



- Add-on excitation modules coupling with commercially available Optical Coherence Tomography (OCT) systems

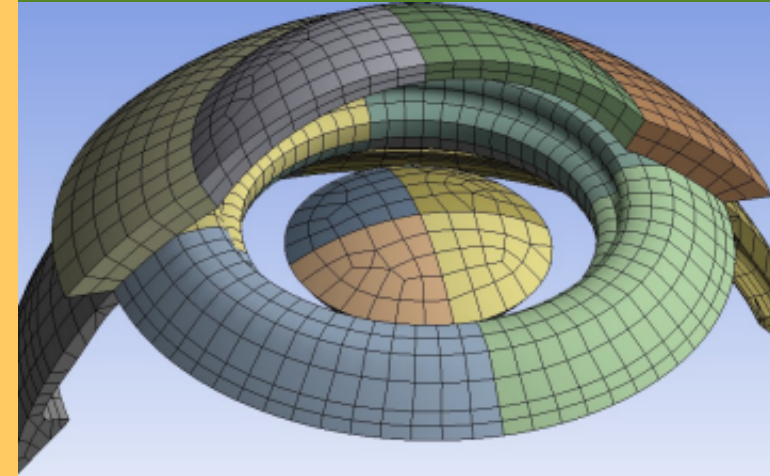


- Diagnostics & treatment planning software



## IMCUSTOMEYE TECHNOLOGY IS...

- Able to individually measure functional properties of the cornea
- Able to measure accurate intraocular pressure
- Provides quantitative parameters for customized treatment planning for patients



IMCUSTOMEYE improves the life of patients with safer & more reliable disease detection and individualized treatment, significantly reducing healthcare costs